

RTD ASSEMBLY WITH WELD PAD (SKIN TEMP.)

MODEL CODE : ER04

- Reference standard :- IEC - 751 / DIN 43760.

SPECIAL FEATURES

- Mineral insulated cable.
- Available in various sheath diameters
- Enclosures (Head)
 - Weatherproof IP - 67
 - Flameproof Gr. IIA, IIB
 - Explosion proof IIA, IIB, II C
- Transmitter output 4 - 20mA (Optional)

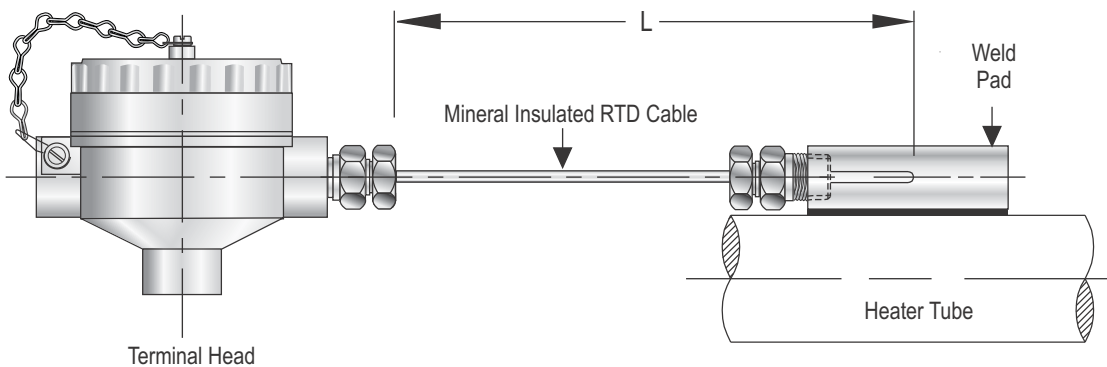
APPLICATIONS

- This design is specifically used to measure skin temperature of heater tube or flat surface. Our Thermocouple Assembly will be with weld pad which will be directly welded on heater tube or flat surface. Curvature to weld pad will be provided as required by customer. Typical applications are measurement of surface temperature of refractory lined vessels, columns, reactors in petrochemical plants and oil refineries and pipelines.

STANDARD PRODUCT DETAILS

No of element	- Simplex
Element type	- Pt - 100
Range	- -200°C till 450°C
Accuracy	- Class 'B' Tolerance as per IEC - 751 / DIN 43760
Wire Configuration	- 3 Wire System
Sheath Diameter	- 6.0 mm
Sheath Material	- SS 316
Terminal Head Type	- Screwed type, weatherproof, IP-65 in Die Cast Aluminum
No of Conduit Entry	- Two
Conduit Entry Size	- 3/4" ET(F)
Mounting Type	- Bracket Mounting for Head
Weld Pad Size	- 50 x 25 x 25 mm
Weld Pad Type	- Flat Surface
Weld Pad Material	- SS 316
Total Length "L"mm	- 1000 mm.
Tag Plate	- Aluminum Tag Plate

DIMENSIONAL DETAILS



Notes : • Drawings are not to scale. • All Dimensions are in mm.

RTD ASSEMBLY WITH WELD PAD (SKIN TEMP.)



MODEL CODE : ER04

HOW TO ORDER

BASIC MODEL

Optional Extras

(Select if you required options other than standard product details)

No of Element

2	Duplex (Above sheath dia. 5 mm)
---	---------------------------------

Element

P2	Pt- 500
P3	Pt - 1000
P4	Cu - 53

Range

C	-200°C till 600°C
---	-------------------

Accuracy

A	Class 'A' Tolerance as per IEC - 751 / DIN 43760
---	--

Wire Configuration

2	2 Wire System
4	4 Wire System

Sheath Diameter

3	3.0 mm
8	8.0 mm
Others, Please specify.	

Terminal Head Type

F	Screwed type, Flameproof Gr. IIA IIB in die-cast Aluminum
E	Screwed type, Explosion proof Gr. IIC in die-cast Aluminum
H	Hinged type, Weatherproof, IP-65 in die-cast Aluminum
B	Weatherproof Head, IP-65 in die-cast Aluminum with cover
3	Terminal Head in SS 304 - WP, IP-67
4	Terminal Head in SS 316 - WP, IP-67
5	Terminal Head in Cast Iron, IP-65

Conduit Entry Size

B	1/2" NPT (F)
C	3/4" NPT (F)
Other, Please Specify	

Mounting Type

S	Surface Mounting For JB
B	Bracket Mounting For Head (Standard)
P	2"NB Pipe Mounting Bracket
L	Local Mounting Without Bracket

Weld Pad Size (L x W x H)

2	100 x 25 x 25 mm
3	100 x 50 x 50 mm
Other, Please Specify	

Round Integral Collar Size (OD x ID x Thk), SS 316

1	30 x 19 x 10 mm
2	40 x 19 x 10 mm
3	50 x 19 x 10 mm
4	Not Applicable
Other, Please Specify	

Example

Weld Pad / Collar Material

3	SS 310
4	SS 446
6	Inconel 600

Weld Pad Type

R	Specify OD of Pipe in mm
---	--------------------------

Total Length

L - Specify in mm.

Other options

13	Head Mounted Transmitter (4-20 mA)
14	SS base plate suitable for Temperature Transmitter Mounting
21	Plug for conduit entry in Carbon Steel
22	Plug for conduit entry in SS 304
23	Plug for conduit entry in SS 316
32	S. C. cable gland in Nickel plated Brass - WP
33	D. C. cable gland in Nickel plated Brass - WP
34	S. C. cable gland in SS 304 - WP
35	D. C. cable gland in SS 304 - WP
36	S. C. cable gland in SS 316 - WP
37	D. C. cable gland in SS 316 - WP
38	S. C. cable gland in Nickel plated Brass - FLP
39	D. C. cable gland in Nickel plated Brass - FLP
40	S. C. cable gland in SS 304 - FLP
41	D. C. cable gland in SS 304 - FLP
42	S. C. cable gland in SS 316 - FLP
43	D. C. cable gland in SS 316 - FLP
PW	Calibration Certificate
SX	SS Tag Plate

Note :

1. When selecting option "PW", please also specify temp. Points at which calibration is to be carried out .

2. Explanations of Abbreviations used:

SC = Single Compression
DC = Double Compression
SS = Stainless Steel
WP = Weatherproof
FLP = Flameproof

Ordering Example:

**ER04 - X - - XX - X - X - X - X - X - X - X - X - X - X -
50mm - 1000mm - SX**

For parameters & specifications other than the above, refer to our nearest sale office.

Note : Specifications and dimensions given in this product catalogue represents the state of engineering at the time of printing.

Modifications may take place and materials specified may be replaced by others without prior notice.

RTD