

# MAGNETIC FLOW METER

ELDG SERIES FOR CONDUCTIVE FLUIDS



## MODEL CODE : ELDG

### SPECIAL FEATURES

- NO PRESSURE DROP
- FREE MAINTENANCE
- ACCURACY 0.5% OF RATE
- OUTPUT SIGNAL PULSE AND 4-20 MA
- COMMUNICATION RS 485 / HART / PROFIBUS - DP
- CONNECTION FLANGE / WAFER / TRI-CLAMP

### APPLICATIONS

COMMONLY USED ON PORTABLE PNEUMATIC EQUIPMENT SUCH AS COMPRESSORS, HAND-HELD SPRAYERS, PRESSURIZED RECREATIONAL GUNS, OXYGEN TANKS AND REGULATORS, PUMPS AND FIRE EXTINGUISHERS



### DESCRIPTION

THE MAGNETIC FLOW METER IS ONE OF THE MOST FLEXIBLE AND UNIVERSALLY APPLICABLE FLOW MEASUREMENT SYSTEMS AVAILABLE. IT PROVIDES COMPLETELY OBSTRUCTION LESS FLOW METERING IS NEARLY INSENSITIVE TO FLUID PROPERTIES AND IS CAPABLE OF MEASURING THE HARSH CORROSIVE FLUIDS. IT INSTALLS LIKE A CONVENTIONAL SEGMENT OF PROCESS PIPING AND HAS A PRESSURE DROP SIMILAR TO AN EQUIVALENT LENGTH OF PIPE. MAGNETIC FLOWMETERS ARE IDEALLY SUITED FOR MEASURING HARSH CHEMICALS, SLURRIES FLUIDS WITH SOLIDS IN SUSPENSION AND OTHER EXTREMELY DIFFICULT MEASURE FLUIDS.

### SPECIFICATIONS

Size		Flow Rate Unit (m <sup>3</sup> /h)		
		V = 0.3 m/s	V = 6 m/s	V = 10 m/s
(mm)	Inch	Min.	Calibrated	Max.
6	1/4	0.0305	0.611	1.018
10	2/4	0.0848	1.696	2.827
15	2/4	0.1909	3.817	6.362
20	3/4	0.3393	6.786	11.31
25	1	0.5301	10.60	17.67
32	1-1/4	0.8686	17.37	28.95
40	1-1/2	1.357	27.14	45.24
50	2	2.121	42.41	70.69
65	2-1/2	3.584	71.68	119.5
80	3	5.429	108.6	181.0
100	4	8.482	169.6	282.7
125	5	13.25	265.1	441.8
150	6	19.09	381.7	636.2
200	8	33.93	678.6	1131
250	10	53.01	1060	1767
300	12	76.34	1527	2545
350	14	103.9	2078	3464
400	16	135.7	2714	4524
450	18	171.8	3435	5726
500	20	212.1	4241	7069
600	24	305.4	6107	10179

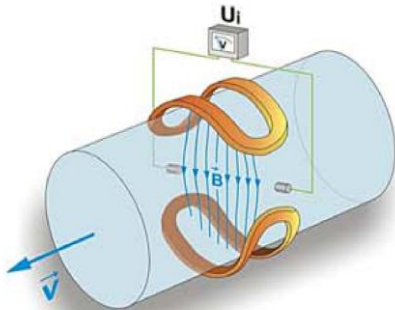
# MAGNETIC FLOW METER

ELDG SERIES FOR CONDUCTIVE FLUIDS



**MODEL CODE : ELDG**

## DIMENSIONS



COMPACT TYPE



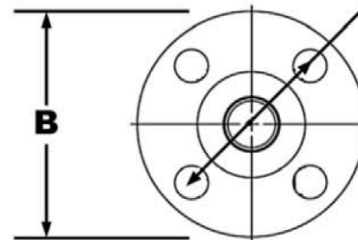
REMOTE TYPE



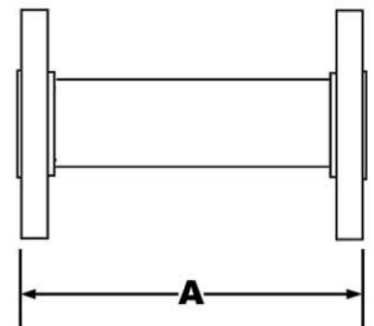
REMOTE CONVERTER :  
SANITARY TYPE



REMOTE SENSOR



PCD



A

**Note:**

The dimensions in table below.

Please consult the factory for other flanges : ANSI or JIS

## SPECIFICATIONS

DIN PN16 Flange (Unit : mm)					
Dimension DN	A	H	H1	D	N X Ød
		Compact Height	Remote Height		
10	160	360	220	90	4 x 14
15	160	360	220	95	4 x 14
20	165	360	220	105	4 x 14
25	200	360	220	115	4 x 14
32	200	370	235	140	4 x 18
40	200	370	235	150	4 x 18
50	200	385	242	165	4 x 18
65	250	400	256	185	4 x 18
80	250	415	275	200	8 x 18
100	250	435	295	220	8 x 18
125	250	465	325	250	8 x 18
150	300	497	355	285	8 x 22
200	350	550	410	340	12 x 22
250	450	610	488	405	12 x 22
300	500	660	520	460	12 x 22

